



# Insights on Immigrant Community Formation in Western Societies

Mohammad Hossein Tekieh

Ottawa | December 2024



"If you've got a talent, you're lonely," *she tells the students.*

"What you want to do is go on with your life because at some point you're going to find somebody who is [as] **lonely** as you are, and then you will build your **community.**"

- Nikki Giovanni (African-American Poet),  
1943-2024




# Role of Ethnic Communities

---


# What is an Ethnic Community?

- An **ethnic community** refers to a group of people who share a common cultural heritage, language, traditions, and often a common ancestry, and who maintain these aspects of their identity within a particular geographic area or society.
- These communities typically form around *shared ethnic backgrounds* and often:
  - provide social support,
  - preserve cultural practices, and
  - create a sense of belonging for their members.



# Importance of Ethnic Communities for Immigrants

- **Preserving Cultural Identity**
  - Close-knit communities support heritage, language, and cultural values.
  - Immigrants retain traditions longer in shared cultural settings.
- **Enhancing Mental Health**
  - Social networks reduce culture shock, stress, and discrimination impacts.
  - Shared resources foster belonging, lowering depression and anxiety.
- **Promoting Economic Mobility**
  - Access to jobs, education, and guidance aids labor market integration.
  - Networks drive economic stability and success.
- **Building Resilience**
  - Social cohesion reduces isolation, poverty, and marginalization.
  - Linked to lower crime and better youth education outcomes.



# Living in Ethnic vs. Mainstream Communities: Key Insights

- **Cultural Retention & Family Stability**
  - Higher rates of native language use and cultural practices in ethnic communities.
  - Second-generation immigrants more likely to maintain cultural traditions.
- **Social Vulnerability**
  - Increased loneliness and discrimination for those outside ethnic communities.
  - Shared culture in communities helps mitigate these challenges.
- **Example:**
  - A Pew Research study found Latino immigrants in predominantly Latino communities felt safer and more connected than those in dispersed settings.

A decorative background featuring two ornate, black metal lanterns with colorful glass panels (yellow, red, green) and a plate of dates in the foreground. The scene is set against a warm, orange-toned background. A white silhouette of a person's head and shoulders is overlaid on the right side of the image.

# Special Considerations for Muslim Immigrants

- **Meeting Religious & Social Needs**
  - Access to halal food, mosques, and Islamic schools supports faith observance.
  - Essential resources for fully practicing their religion.
- **Support Against Islamophobia**
  - Communities provide safety and reduce isolation.
  - Empowerment and resilience reported by Muslims in close-knit networks (e.g., ENAR study).
- **Youth Identity & Mental Health**
  - Strong community presence boosts self-esteem and reduces identity conflicts.
  - Balances cultural heritage with societal expectations, lowering risks like isolation or radicalization.

# Recap: Role of Ethnic Communities

## Cultural Preservation

- Retain heritage, language, and traditions across generations.

## Social Resilience

- Foster belonging, mental health, and protection against discrimination.

## Economic Mobility

- Provide resources and networks for job integration and stability.

# Categories of Immigrants

---

# Immigrant Adaptation Categories

- **Developed by John W. Berry (Cross-Cultural Psychology)**
  - Framework categorizes immigrants based on interaction with heritage and host cultures.
- **Four Categories:**
  - **Assimilation:** Abandons heritage culture, fully adopts host culture.
  - **Integration:** Balances and participates in both cultures.
  - **Separation:** Retains heritage culture, minimizes engagement with host culture.
  - **Marginalization:** Limited connection to both heritage and host cultures.
- *Widely used to understand immigrant adjustment in sociology.*

# Assimilation

- **Definition:**
  - Abandoning heritage culture to fully adopt the host society's culture for acceptance or economic mobility.
- **Examples:**
  - **First-Generation:** Focuses on adopting host norms (e.g., learning language, celebrating local customs) while leaving behind traditional practices.
  - **Second-Generation:** Fully identifies with the host culture, losing connection to heritage language and traditions.
- **Sociological Context:**
  - Often linked to the "melting pot" model, emphasizing conformity to dominant culture at the cost of cultural identity.

# Integration

- **Definition:**
  - Participating in the host society's culture and systems while retaining heritage culture.
- **Examples:**
  - **First-Generation:** Adopts host norms (e.g., language, work culture) while maintaining traditions like holidays and native language at home.
  - **Second-Generation:** Balances both cultures, bilingual, and celebrates traditions from both heritage and host societies.
- **Sociological Context:**
  - Ideal in multicultural societies, promoting healthy adaptation and cultural retention.
  - Encourages contributions to society without losing cultural identity.

# Separation

- **Definition:**
  - Retaining strong ties to heritage culture while avoiding interaction with the host culture, often due to exclusion or personal choice.
- **Examples:**
  - **First-Generation:** Maintains cultural norms, language, and customs while limiting interaction with the host society (e.g., Syrian refugees forming cultural enclaves in Germany).
  - **Second-Generation:** Retains heritage identity with limited engagement in the host culture due to family or social pressures.
- **Sociological Context:**
  - Often occurs in societies with discrimination or lack of inclusivity.
  - Results in cultural enclaves where the host culture's influence is minimized.

# Marginalization

- **Definition:**
  - Immigrants lack strong connections to either their heritage or host culture, often due to discrimination, isolation, or alienation.
- **Examples:**
  - **First-Generation:** Faces challenges in both cultures, feeling disconnected from both heritage and host society (e.g., Somali immigrant in France).
  - **Second-Generation:** Experiences identity confusion and social alienation, often feeling neither fully accepted by the host society nor connected to heritage culture.
- **Sociological Context:**
  - Linked to mental health issues, poverty, and social exclusion.
  - Common in immigrant groups facing discrimination or living in areas with limited support.

# Recap: Categories of Immigrants

## Assimilation:

- Focuses on social pressures to "fit in" or adopt a single national identity.
- Common in "melting pot" societies that encourage cultural uniformity.

## Integration:

- Preferred in multicultural societies valuing diversity.
- Encourages retaining heritage while engaging with the host culture.

## Separation:


- Discussed in terms of immigrant enclaves or cultural communities.
- Happens when exclusion from the host culture leads to cultural distinctiveness.

## Marginalization:

- Linked to social exclusion, identity struggles, and discrimination.
- Associated with vulnerability, mental health challenges, and social isolation.

# Why Not to Assimilate?





# Assimilation: Complex and Context- Dependent

- **Potential Benefits**
  - Opens doors to social and economic opportunities.
  - May reduce discrimination and prejudice.
- **Challenges**
  - Social, cultural, and economic barriers hinder full integration.
  - Assimilation often demands sacrificing cultural identity.
- **Outcomes**
  - Complete assimilation may not be feasible or beneficial for all.
  - Some immigrants face separation or marginalization due to systemic barriers.

# Challenges to Assimilation

## Cultural Identity and Preservation

Assimilation can threaten cultural practices, language, and beliefs.  
Maintaining heritage fosters confidence and continuity across generations.

## Social Barriers and Discrimination

Biases in jobs, housing, and social acceptance hinder efforts to integrate.  
Discrimination reinforces a sense of "otherness."

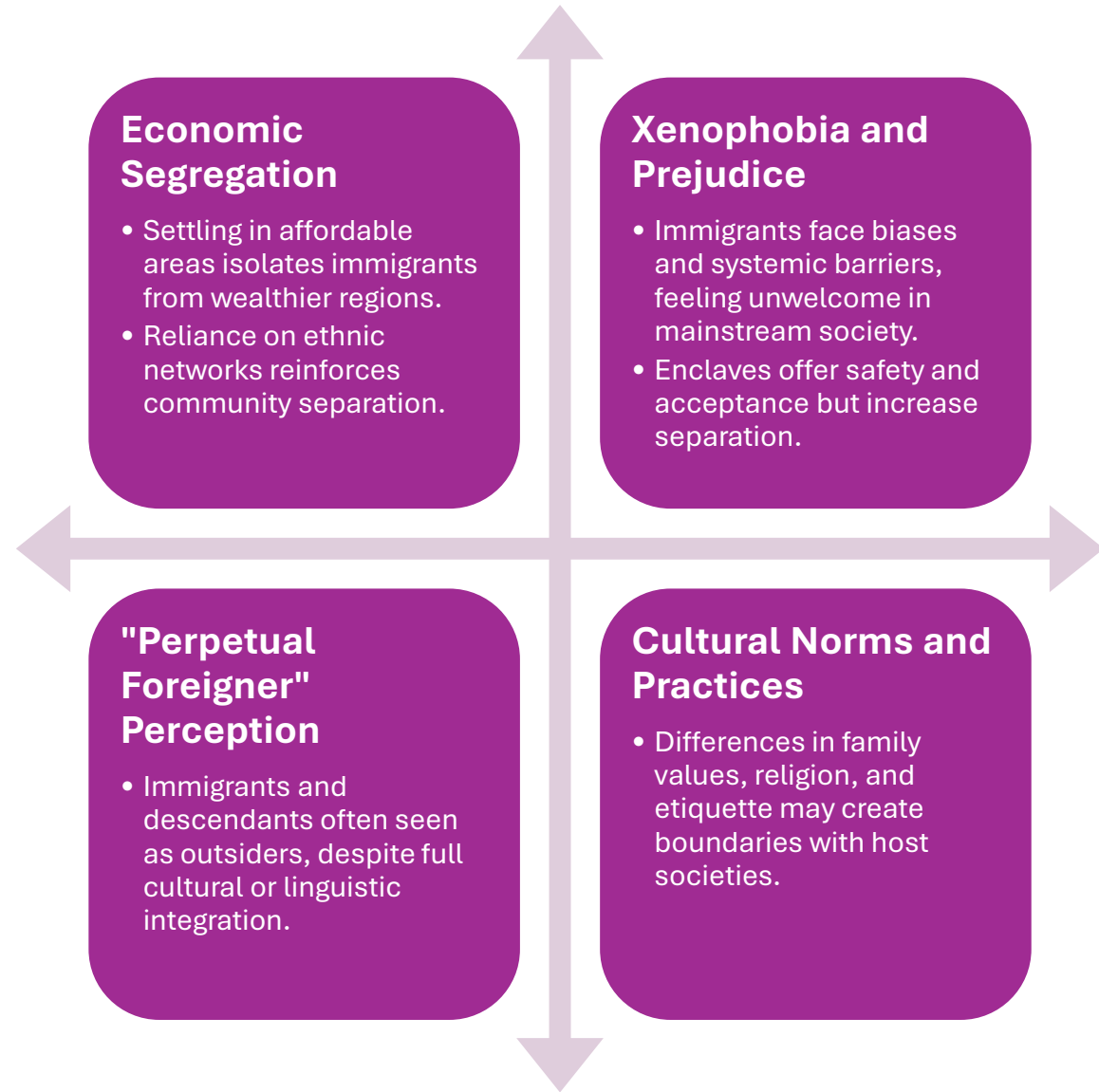
## Language and Education

Language proficiency is critical but challenging for first-generation immigrants.  
Impacts access to jobs, education, and social services.

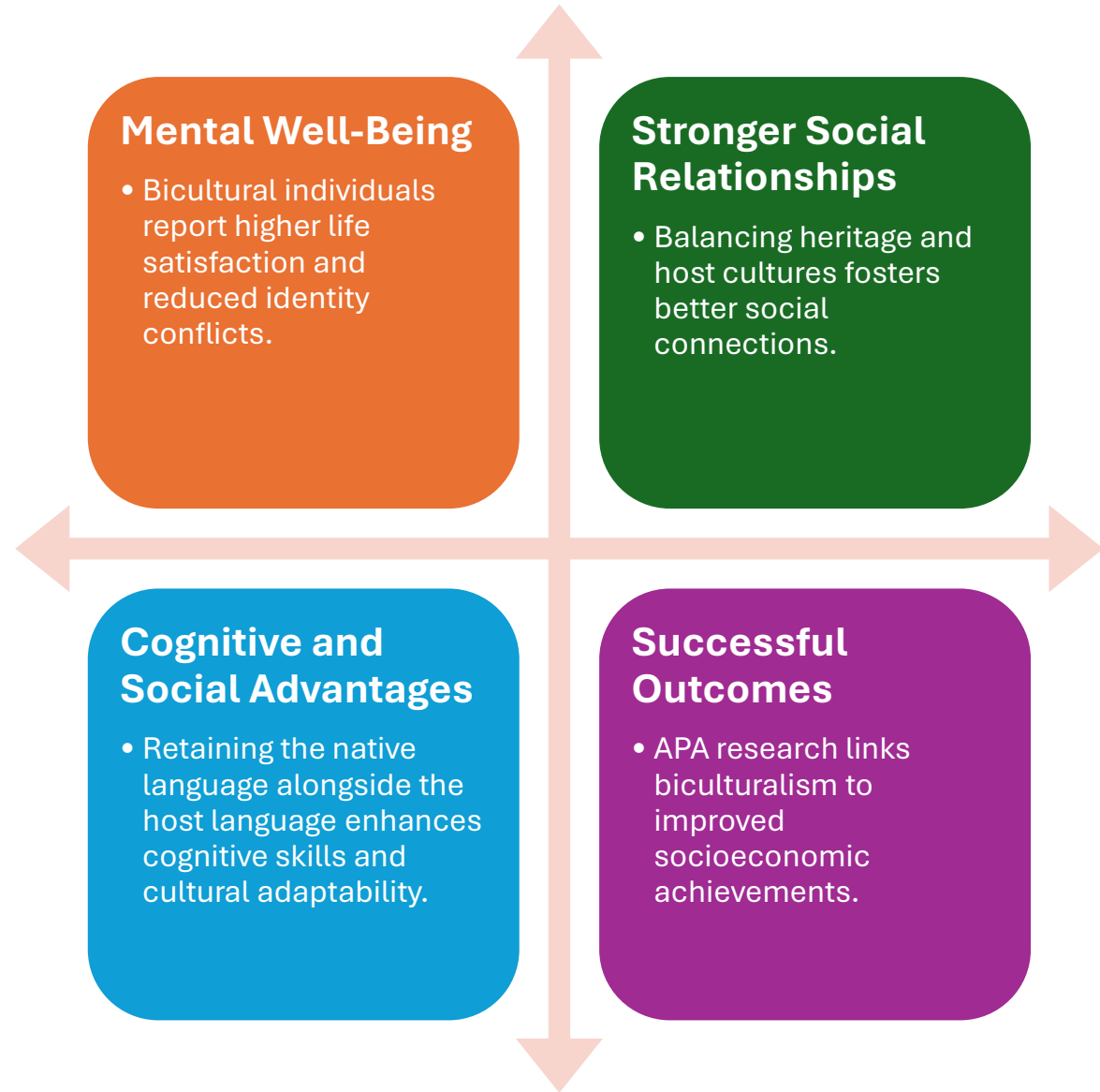
## Socioeconomic Constraints

Limited job opportunities, wages, and housing options create barriers.  
Economic struggles often lead to clustering in immigrant-dense areas.

# Reasons for Immigrant Separation or Marginalization



# Benefits of Partial Assimilation or Biculturalism



# Biculturalism vs. Integration

- **Biculturalism**
  - **Dual Identity:** Retains heritage culture while adopting host culture.
  - **Psychological Benefits:** Higher self-esteem, mental health, and adaptability.
  - **Flexibility:** Navigate and switch between cultural norms with ease.
- **Integration**
  - **Engagement:** Participates in workforce, education, and community life.
  - **Social Acceptance:** Two-way process involving host society adaptation.
  - **Commitment:** Aligns with core values and legal norms of host society.
- **Relationship Between the Two**
  - **Biculturalism Enhances Integration:** Encourages participation without losing identity.
  - **Integration Without Biculturalism:** Possible through full assimilation or limited cultural retention.
- **Summary:** *Biculturalism balances two cultures, while integration focuses on participation in societal systems. Together, they foster diversity and cohesion.*

# Is Assimilation Always Desirable?

- **Not Always Necessary or Ideal**
  - Full assimilation is not required for societal contribution or success.
- **Benefits of Cultural Diversity**
  - Enriches communities, introduces fresh perspectives, and fosters innovation.
- **Heritage as a Buffer**
  - Retaining cultural identity helps reduce psychological stress during adaptation.

# Recap: Why Not to Assimilate?

## Impractical and Often Undesirable

- Cultural heritage, language, and economic factors shape integration levels.

## Influential Factors

- Host society's attitudes, prejudice, and systemic barriers hinder assimilation.

## Outcomes

- Separation and marginalization often result from societal and structural constraints.

# Challenges of Community Building

---

# Challenges in Building and Sustaining Ethnic Communities in Western Countries

## Discrimination and Xenophobia

- **Social Exclusion:** Discrimination, racism, and negative stereotypes hinder cohesion and public acceptance.
- **Legal and Social Barriers:** Legal frameworks may restrict cultural expression, e.g., religious attire or religious sites.

## Economic Barriers

- **Access to Resources and Capital:** Limited financial resources for community projects due to economic system barriers.
- **High Costs of Living:** Geographic displacement to less central areas reduces community cohesion.

## Fragmentation Within the Ethnic Community

- **Internal Diversity:** Differences in language, region, or political background can create sub-communities.
- **Generational Differences:** Cultural and identity gaps between first and subsequent generations hinder unity.

## Limited Political Influence and Representation

- **Underrepresentation:** Lack of political presence limits advocacy and community rights protection.
- **Language Barriers and Bureaucracy:** Language challenges and unfamiliarity with local politics limit community engagement.

# Challenges in Building and Sustaining Ethnic Communities in Western Countries

## Pressures to Assimilate and Social Stigmas

- **Pressure to Conform:** Pressure to assimilate minimizes cultural visibility.
- **Fear of Isolation:** Concerns over accusations of "self-segregation" hinder community-building.

## Challenges in Cultural Preservation

- **Language Loss and Cultural Dilution:** Second- and third-generation members face challenges in retaining heritage culture.
- **Balancing Integration and Preservation:** Tension between integrating into the host culture and maintaining cultural heritage.

## Media Representation and Public Perception

- **Negative Media Stereotypes:** Media misrepresentation reinforces bias and public distrust.
- **Social Pressure to "Fit In" with Dominant Narratives:** Immigrants face societal pressure to prove their loyalty to the host culture.

## Lack of Institutional Support for Cultural Initiatives

- **Limited Funding and Volunteering for Community Programs:** Limited access to resources for cultural events or institutions.
- **Education and Cultural Programs:** Insufficient support in schools to teach heritage language or culture, weakening cultural identity.

# Example: Challenges for a Muslim Ethnic Community in the West

## Discrimination and Social Exclusion

- Muslims often face **Islamophobia** and stereotyping, particularly after the **9/11** era.
- Challenges include social resistance to building **mosques** or wearing **religious attire** publicly.

## Economic and Political Underrepresentation

- Limited **political representation** and **economic resources** hinder community advocacy.
- Difficulty in securing **religious accommodations** (e.g., prayer spaces in public institutions, halal food in schools).

## Internal Diversity and Generation Gaps

- **Internal fragmentation** based on regional, linguistic, or generational differences.
- Younger generations may struggle between **Western norms** and **heritage cultural expectations**, leading to tensions.

## Cultural Preservation

- Maintaining **mother-tongue language** and **traditions** is challenging in **Western school systems**.
- Younger generations may become **disconnected** from their heritage, hindering community cohesion.

# Recap: Challenges of Community Building

- The challenges to ethnic community building in the West are:
  - multi-layered,
  - involving discrimination,
  - economic limitations,
  - generational divides, and
  - the pressures of assimilation.
- Despite these obstacles, many ethnic communities successfully develop **vibrant cultural identities**, though overcoming these barriers often requires **resilience, resourcefulness, and advocacy** within the broader society.



## Community...

forms when people with **shared struggles** come together,

overcoming **loneliness** and **isolation**

to create spaces of **belonging** and **mutual support**.